

IMPORTANT SAFETY INSTRUCTIONS

Swimming Pool Products

1871 Aspen Circle • Pueblo, Colorado 81006 • Phone 719-544-9544

PERMA-CAST

**PoolBond – Water Bonding Fitting
Model #:PB-2008
Installation and Safety Instructions
For Any Questions Call 1-800-748-2770**



LISTED
40YZ

(Patent Pending and UL Listed)

READ AND FOLLOW ALL SAFETY INSTRUCTIONS

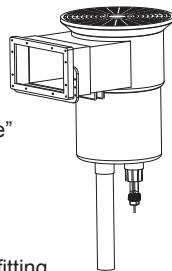
Included: One Poolbond fitting, one bonding lug.
Fitting Type: 1" NPT male pipe thread.

Application: PoolBond can be installed on swimming pools, spas, bathtubs, ponds and fountains. PoolBond will effectively connect the water in pools, spas, and fountains to the equipotential bonding system.
Important: PoolBond must be installed at an elevation below the water line to insure that the water remains bonded when the filtration system is not operated. Installation is shown for an in-ground swimming pool. On other installations, the same guidelines apply.

Where to Install: PoolBond can be installed at any location in the pool's filtration piping as long as the elevation of the PoolBond fitting is at least 3 inches below the elevation of the pools water surface. Always install PoolBond in an orientation that avoids trapped air. Three typical installations are illustrated below. Care must be taken to properly pressure test all plumbing prior to burial of lines. Review "Assembly Procedure" for proper tightening of the PoolBond fitting in plastic plumbing. PoolBond is cast from a corrosion resistant bronze alloy and will not corrode under normal swimming pool chemical conditions including salt system sanitation.

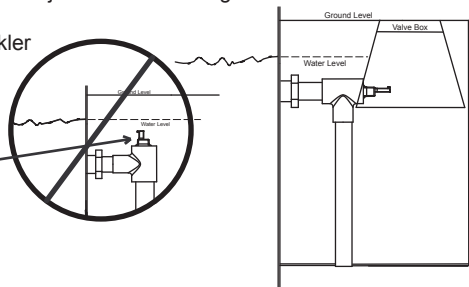
1. Install in Skimmer:

- Using proper sized plastic bushings, PoolBond can be installed in one of the threaded skimmer outlet ports. See "Assembly Procedure" for proper tightening of PoolBond.



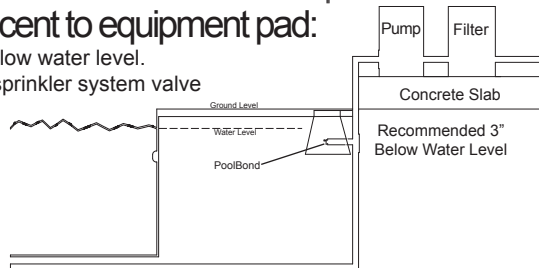
2. Install in a return line:

- PoolBond can be installed in the filtration return line adjacent to inlet fitting. Avoid installations that could trap air.
- If access is required for service purposes, a sprinkler system valve box can be used for access.



3. Install on suction side adjacent to equipment pad:

- Install on suction side plumbing at least 3" below water level.
- If access is required for service purposes, a sprinkler system valve box can be used.



SAVE THESE INSTRUCTIONS

IMPORTANT SAFETY INSTRUCTIONS

Swimming Pool Products

1871 Aspen Circle • Pueblo, Colorado 81006 • Phone 719-544-9544

PERMA-CAST

**PoolBond – Water Bonding Fitting
Model #:PB-2008
Installation and Safety Instructions
For Any Questions Call 1-800-748-2770**



LISTED
40YZ

(Patent Pending and UL Listed)

READ AND FOLLOW ALL SAFETY INSTRUCTIONS

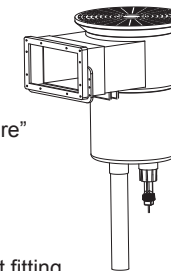
Included: One Poolbond fitting, one bonding lug.
Fitting Type: 1" NPT male pipe thread.

Application: PoolBond can be installed on swimming pools, spas, bathtubs, ponds and fountains. PoolBond will effectively connect the water in pools, spas, and fountains to the equipotential bonding system.
Important: PoolBond must be installed at an elevation below the water line to insure that the water remains bonded when the filtration system is not operated. Installation is shown for an in-ground swimming pool. On other installations, the same guidelines apply.

Where to Install: PoolBond can be installed at any location in the pool's filtration piping as long as the elevation of the PoolBond fitting is at least 3 inches below the elevation of the pools water surface. Always install PoolBond in an orientation that avoids trapped air. Three typical installations are illustrated below. Care must be taken to properly pressure test all plumbing prior to burial of lines. Review "Assembly Procedure" for proper tightening of the PoolBond fitting in plastic plumbing. PoolBond is cast from a corrosion resistant bronze alloy and will not corrode under normal swimming pool chemical conditions including salt system sanitation.

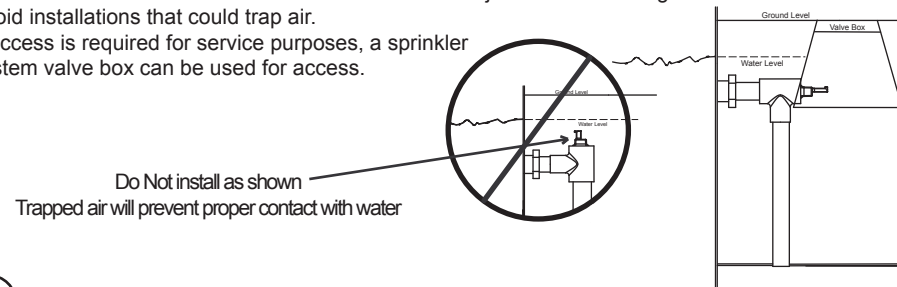
1. Install in Skimmer:

- Using proper sized plastic bushings, PoolBond can be installed in one of the threaded skimmer outlet ports. See "Assembly Procedure" for proper tightening of PoolBond.



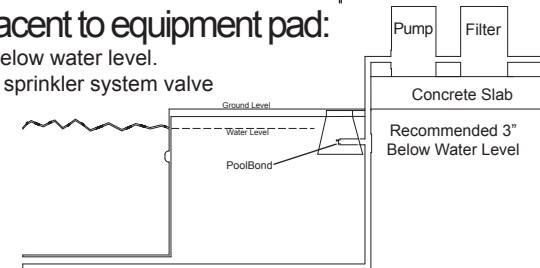
2. Install in a return line:

- PoolBond can be installed in the filtration return line adjacent to inlet fitting. Avoid installations that could trap air.
- If access is required for service purposes, a sprinkler system valve box can be used for access.



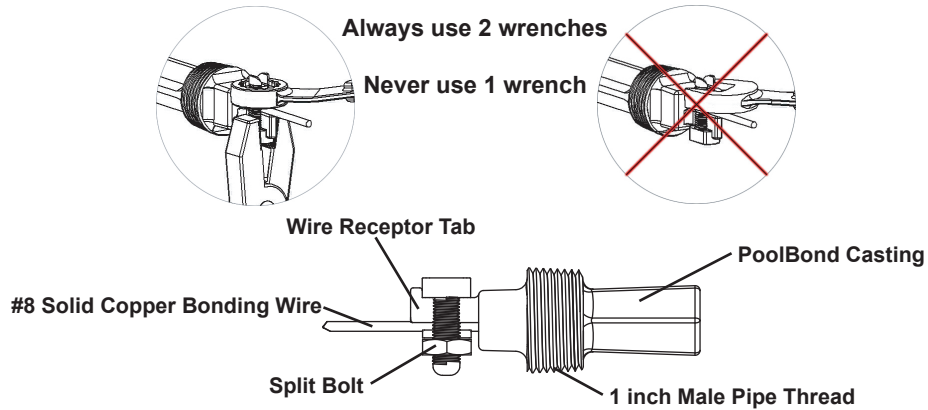
3. Install on suction side adjacent to equipment pad:

- Install on suction side plumbing at least 3" below water level.
- If access is required for service purposes, a sprinkler system valve box can be used.



SAVE THESE INSTRUCTIONS

Bond Wire Installation: Connect a solid #8 copper bonding wire (not supplied) from the bonding system. The copper wire should also connect to the metal parts of all electrical equipment and all metal fittings, parts, and piping of the swimming pool, spa, pond, or fountain within 5 feet of the inside wall of the pool or spa and the pond or fountain structure. Always use 2 wrenches when tightening the split bolt to avoid bending the wire receptor tab on the PoolBond fitting. Tighten split bolt to 120 in-lbs.

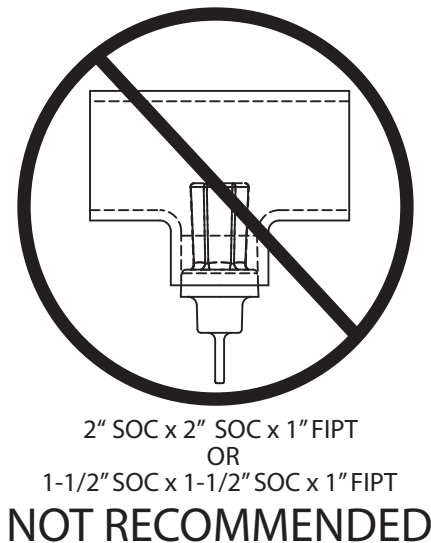
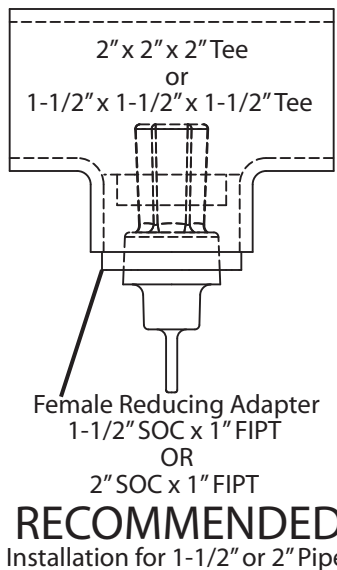


Assembly Procedure

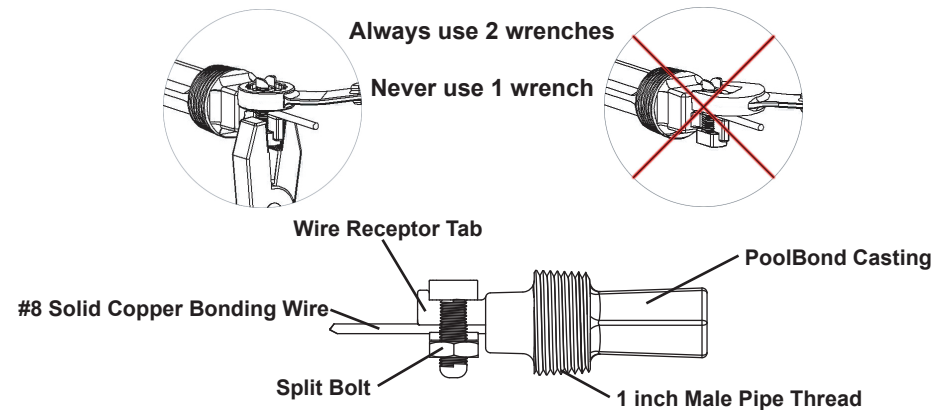
To properly install a male threaded pipe (metal) into a female threaded fitting (plastic) you should first thread the pipe into the fitting (dry fit) until the pipe just starts to tighten on the pipe thread taper. Count the number of turns that it takes; disengage the two parts (document this number).

Wrap Teflon tape and/or apply Pipe sealant on the male thread in the normal way and reassemble to the number of turns required to disengage the two parts. **NOW** tighten two more turns **STOP**.

Caution: Overtightening PoolBond Fitting can Damage Plastic Plumbing.



Bond Wire Installation: Connect a solid #8 copper bonding wire (not supplied) from the bonding system. The copper wire should also connect to the metal parts of all electrical equipment and all metal fittings, parts, and piping of the swimming pool, spa, pond, or fountain within 5 feet of the inside wall of the pool or spa and the pond or fountain structure. Always use 2 wrenches when tightening the split bolt to avoid bending the wire receptor tab on the PoolBond fitting. Tighten split bolt to 120 in-lbs.



Assembly Procedure

To properly install a male threaded pipe (metal) into a female threaded fitting (plastic) you should first thread the pipe into the fitting (dry fit) until the pipe just starts to tighten on the pipe thread taper. Count the number of turns that it takes; disengage the two parts (document this number).

Wrap Teflon tape and/or apply Pipe sealant on the male thread in the normal way and reassemble to the number of turns required to disengage the two parts. **NOW** tighten two more turns **STOP**.

Caution: Overtightening PoolBond Fitting can Damage Plastic Plumbing.

