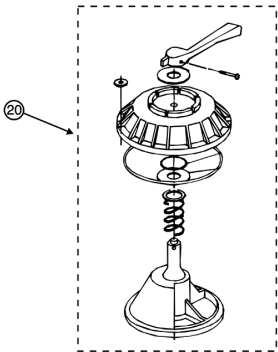
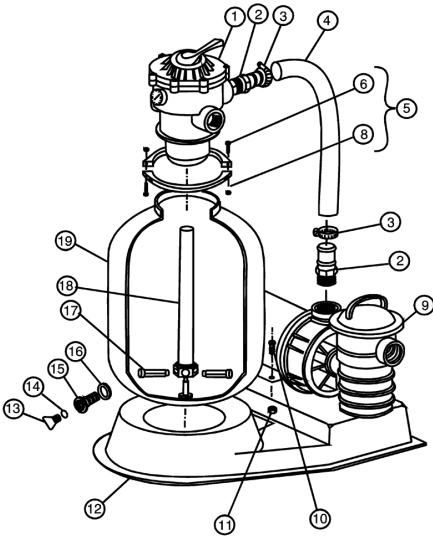


SAND DOLLAR FILTER SYSTEMS REPLACEMENT PARTS MANUFACTURED PRIOR TO 2009

REPLACEMENT PARTS



SAND DOLLAR FILTER SYSTEMS

| Item No. | Part No. | Description |
|----------|----------|--|
| 1 | 262506 | Valve 6-way assembly |
| 2 | 711006 | Adapter 1-1/2 in. hose, 2 req. |
| 2 | 150046 | Adapter w/chlorinator conn., 2 req. |
| 3 | 711004 | Clamp hose, 3 req. |
| 4 | 154893 | Hose 21-1/2 in. clear/grey spiral, SD 35 |
| 4 | 154894 | Hose 26 in. clear/grey spiral, SD 40 |
| 4 | 154895 | Hose 30 in. clear/grey spiral, SD 60 |
| 5 | 152165 | Clamp Assembly - aboveground system ¹ |
| 6 | 152168 | Screw #M6 x 1 pan head Phillips s/s, 2 req. ¹ |
| 8 | 152167 | Nut #M6 s/s, 2 req. ¹ |
| 9 | | Dynamo Pump |
| 10 | 354265 | Screw 1/4 in. - 18 hex washer head, 2 req. ² |
| 11 | 155109 | T-Nut 4 prong 5/16 in. - 18, req. ² |

| | | |
|----|--------|---|
| 12 | 152901 | Base assembly ² |
| 13 | 154699 | Drain Plug drain 1/4 in. NPT wing ⁵ |
| 14 | 192115 | Drain Plug O-Ring (2 req.) (1/16 in. x 1/2 in. i.d.) ⁵ |
| 15 | 154710 | Drain, Sand, 1 in., 5, ACME ⁵ |
| 15 | 150055 | Drain kit ⁴ |
| 16 | 154713 | Gasket, sand drain ³ |
| 17 | 155007 | Lateral SD35, 8 req. |
| 17 | 152290 | Lateral SD40, SD60, 8 req. |
| 17 | 150084 | Lateral SD35, SD40 ⁴ |
| 17 | 150085 | Lateral XLong, SD60 ³ |
| 18 | 155504 | Piping (internal) assembly - SD35 |
| 18 | 155062 | Piping Assembly (internal) assembly - SD40 |
| 18 | 155532 | Piping (internal) assembly - SD60 |
| 19 | 145324 | Tank w/internals SD35, almond |
| 19 | 145327 | Tank w/internals SD40, almond |
| 19 | 145330 | Tank w/internals SD60, almond |
| 20 | 272531 | HiFlow 1-1/2 in. top valve assembly |

NOT SHOWN

| Item No. | Part No. | Description |
|----------|----------|--|
| | 155151 | Hose Kit, 1 1/2 in. x 6 ft. filter/pump to pool |
| | 155005 | Hose Kit, 1 1/2 in. x 12 ft. filter/pump to pool |
| | 154712 | Drain cap 1-1/2" |
| | 154715 | O-ring for 1-1/2" drain cap |
| | 155167 | Kit Bag Systems |

- 1: P/N 152165 (clamp assy.) consists of 2 each of the following: P/N 152166 (clamp half), P/N 152167 (nut) and P/N 152168 (screw).
- 2: P/N 152901 (aboveground base) consists of P/N 152900 (base) and 2 each of the following: P/N 155109 (T4 nuts) and P/N 354265 (screw).
- 3: P/N 192040 O-ring used on tanks manufactured after 1/1/03.
- 4: Manufactured after 10/04.
- 5: Manufactured before 10/04.